

The City has two Small City Allotment Grants. One was for 3rd and 4th Street Overlays. One is for 2nd Street.

The first grant is for \$50,000 to do 3rd and 4th Street.

Current estimate to do the overlay is \$22,389 each street for an estimate of \$44,778.

The Second grant is for \$100,000

We have developed multiple ideas but to have the most parking, 19 spaces instead of 11 I would propose the attached layout.

Current estimate to do 2nd street with this alternative is \$157,609.

There are two issues at this time. The grant requires ADA ramps at Highway 30. We are trying to keep this from applying to all three streets but it looks like it will be required on 2nd Street.

An estimate for Handicap ramps on Highway 30 is \$50,000.

With the Contractor already being under contract and as part of the larger project it can be completed at a lower cost.

SCA Grant

4th St Overlay	\$ 25,000
3rd St Overlay	\$ 25,000
2nd St Upgrade	\$ 157,000
Handicap Ramps B street	\$ 50,000
Total	\$ 257,000
SCA Grant Funds	\$ 150,000
Cost to City	\$ 107,000

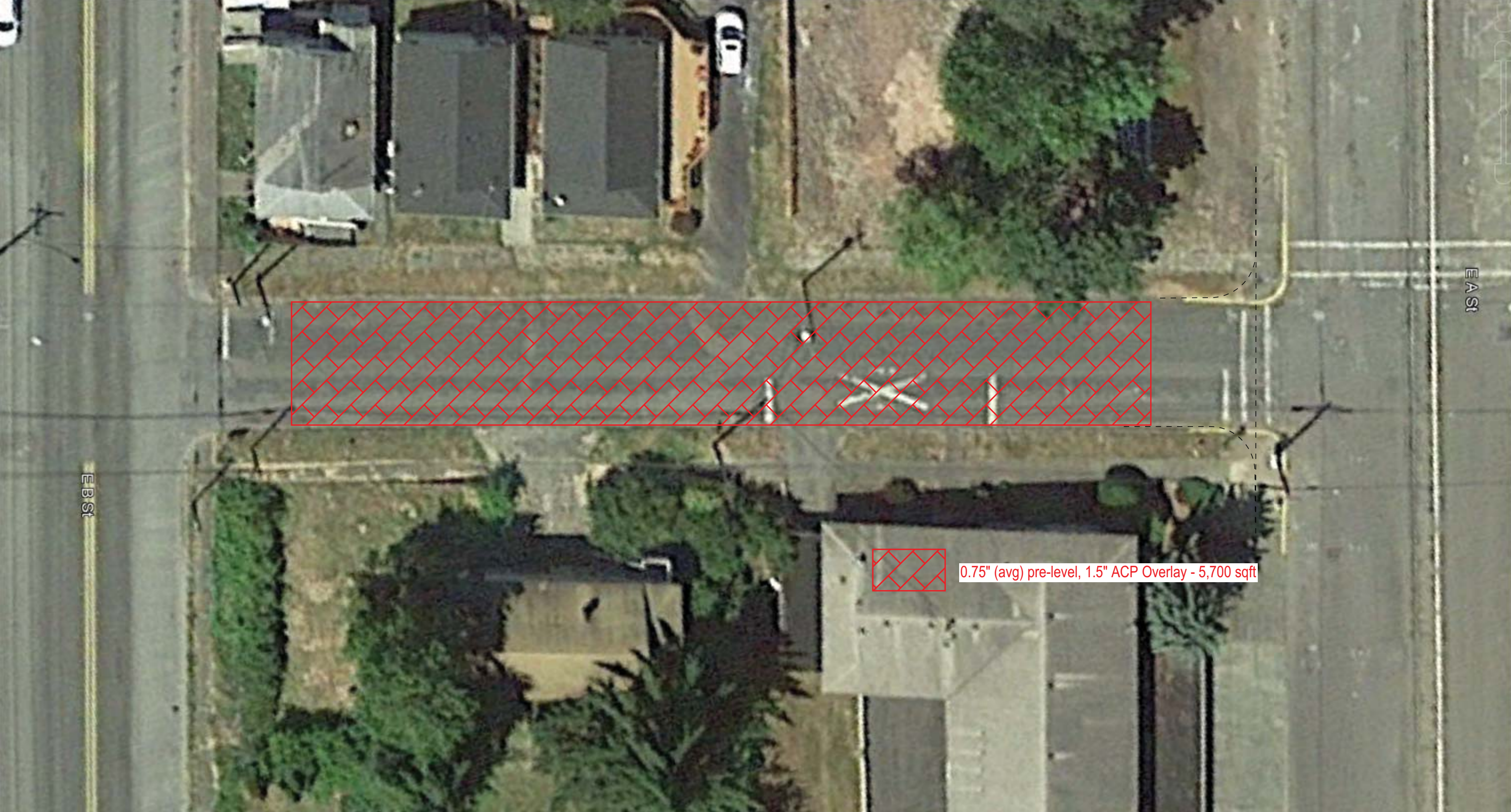
CONSTRUCTION COST ESTIMATE					
AGENCY					
SECTION				COUNTY	
E 2nd St - Rainier, OR				Columbia	
DEA PROJECT #	KIND OF WORK	LENGTH	DATE	PREPARED BY	
ODOT-0953	Paving	215'	12/20/19	DEA, Inc.	
ITEM NUMBER	ITEM DESCRIPTION	UNIT	AMOUNT	UNIT COST	TOTAL
TEMPORARY FEATURES AND APPURTENANCES		TOTAL FOR GROUP		\$20,126	
0210-0100000A	MOBILIZATION	LS	1	10.0% Biddable	\$ 11,866
0225-0100000A	TEMPORARY PROTECTION AND DIRECTION OF TRAFFIC	LS	1	2.5% Biddable	\$ 2,966
0225-0102000J	TEMPORARY SIGNS	SQFT	64	\$ 25.00	\$ 1,600
0225-0105000E	TEMPORARY BARRICADES, TYPE III	EACH	2	\$ 300.00	\$ 600
0225-0168000T	FLAGGERS	HOUR	32	\$ 62.00	\$ 1,984
0280-0100000A	EROSION CONTROL	LS	1	\$ 500.00	\$ 500
0280-0114030E	INLET PROTECTION, TYPE 3	EACH	2	\$ 55.00	\$ 110
0290-0100000A	POLLUTION CONTROL PLAN	LS	1	\$ 500.00	\$ 500
ROADWORK		TOTAL FOR GROUP		\$24,430	
0310-0106000A	REMOVAL OF STRUCTURES AND OBSTRUCTIONS	LS	1	\$ 5,000.00	\$ 5,000
0330-0105000K	GENERAL EXCAVATION	CUYD	150	\$ 100.00	\$ 15,000
0350-0105000J	SUBGRADE GEOTEXTILE	SQYD	435	\$ 2.00	\$ 870
BASES		TOTAL FOR GROUP		\$20,000	
0641-0102000K	AGGREGATE BASE	TON	200	\$ 100.00	\$ 20,000
WEARING SURFACES		TOTAL FOR GROUP		\$72,495	
0744-0202000M	LEVEL 2, 1/2 INCH ACP MIXTURE	TON	145	\$ 145.00	\$ 21,025
0744-0261000M	LEVEL 2, 1/2 INCH ACP MIXTURE IN LEVELING AND TEMPORARY	TON	30	\$ 145.00	\$ 4,350
0759-0110000F	CONCRETE CURBS, STANDARD CURB	FOOT	520	\$ 35.00	\$ 18,200
0759-0126000J	CONCRETE DRIVEWAYS	SQFT	420	\$ 20.00	\$ 8,400
0759-0128000J	CONCRETE WALKS	SQFT	1,140	\$ 18.00	\$ 20,520
SUBTOTAL, BIDDABLE ITEMS (w/o % Biddable)					\$ 118,659
SUBTOTAL, BIDDABLE ITEMS					\$ 137,051
CONTINGENCIES / CONSTRUCTION ENGINEERING		TOTAL FOR GROUP		\$20,558	
	CONSULTANT CONSTRUCTION ENGINEERING	10%		\$ 13,705.11	
	COUNTY CONSTRUCTION ADMINISTRATION			\$ -	
	CONTINGENCIES	5%		\$ 6,853	
TOTAL CONSTRUCTION COST					\$ 157,609

CONSTRUCTION COST ESTIMATE						
AGENCY						
SECTION				COUNTY		
E 3rd St - Rainier, OR				Columbia		
DEA PROJECT #	KIND OF WORK	LENGTH	DATE	PREPARED BY		
ODOT-0953	Paving	190'	11/20/19	DEA, Inc.		
ITEM NUMBER	ITEM DESCRIPTION	UNIT	AMOUNT	UNIT COST	TOTAL	
TEMPORARY FEATURES AND APPURTENANCES			TOTAL FOR GROUP		\$5,913	
0210-0100000A	MOBILIZATION	LS	1	10.0% Biddable	\$ 1,686	
0225-0100000A	TEMPORARY PROTECTION AND DIRECTION OF TRAFFIC	LS	1	2.5% Biddable	\$ 421	
0225-0102000J	TEMPORARY SIGNS	SQFT	64	\$ 25.00	\$ 1,600	
0225-0105000E	TEMPORARY BARRICADES, TYPE III	EACH	2	\$ 300.00	\$ 600	
0225-0168000T	FLAGGERS	HOUR	8	\$ 62.00	\$ 496	
0280-0100000A	EROSION CONTROL	LS	1	\$ 500.00	\$ 500	
0280-0114030E	INLET PROTECTION, TYPE 3	EACH	2	\$ 55.00	\$ 110	
0290-0100000A	POLLUTION CONTROL PLAN	LS	1	\$ 500.00	\$ 500	
WEARING SURFACES			TOTAL FOR GROUP		\$13,050	
0744-0202000M	LEVEL 2, 1/2 INCH ACP MIXTURE	TON	60	\$ 145.00	\$ 8,700	
0744-0261000M	LEVEL 2, 1/2 INCH ACP MIXTURE IN LEVELING AND TEMPORARY	TON	30	\$ 145.00	\$ 4,350	
SUBTOTAL, BIDDABLE ITEMS (w/o % Biddable)					\$	16,856
SUBTOTAL, BIDDABLE ITEMS					\$	19,469
CONTINGENCIES / CONSTRUCTION ENGINEERING			TOTAL FOR GROUP		\$2,920	
	CONSULTANT CONSTRUCTION ENGINEERING			10%	\$	1,946.87
	COUNTY CONSTRUCTION ADMINISTRATION				\$	-
	CONTINGENCIES			5%	\$	973
TOTAL CONSTRUCTION COST					\$	22,389

CONSTRUCTION COST ESTIMATE					
AGENCY					
SECTION E 4th St - Rainier, OR				COUNTY Columbia	
DEA PROJECT # ODOT-0953	KIND OF WORK Paving	LENGTH 190'	DATE 11/20/19	PREPARED BY DEA, Inc.	
ITEM NUMBER	ITEM DESCRIPTION	UNIT	AMOUNT	UNIT COST	TOTAL
TEMPORARY FEATURES AND APPURTENANCES		TOTAL FOR GROUP		\$5,913	
0210-0100000A	MOBILIZATION	LS	1	10.0% Biddable	\$ 1,686
0225-0100000A	TEMPORARY PROTECTION AND DIRECTION OF TRAFFIC	LS	1	2.5% Biddable	\$ 421
0225-0102000J	TEMPORARY SIGNS	SQFT	64	\$ 25.00	\$ 1,600
0225-0105000E	TEMPORARY BARRICADES, TYPE III	EACH	2	\$ 300.00	\$ 600
0225-0168000T	FLAGGERS	HOUR	8	\$ 62.00	\$ 496
0280-0100000A	EROSION CONTROL	LS	1	\$ 500.00	\$ 500
0280-0114030E	INLET PROTECTION, TYPE 3	EACH	2	\$ 55.00	\$ 110
0290-0100000A	POLLUTION CONTROL PLAN	LS	1	\$ 500.00	\$ 500
WEARING SURFACES		TOTAL FOR GROUP		\$13,050	
0744-0202000M	LEVEL 2, 1/2 INCH ACP MIXTURE	TON	60	\$ 145.00	\$ 8,700
0744-0261000M	LEVEL 2, 1/2 INCH ACP MIXTURE IN LEVELING AND TEMPORARY	TON	30	\$ 145.00	\$ 4,350
SUBTOTAL, BIDDABLE ITEMS (w/o % Biddable)					\$ 16,856
SUBTOTAL, BIDDABLE ITEMS					\$ 19,469
CONTINGENCIES / CONSTRUCTION ENGINEERING		TOTAL FOR GROUP		\$2,920	
	CONSULTANT CONSTRUCTION ENGINEERING			10%	\$ 1,946.87
	COUNTY CONSTRUCTION ADMINISTRATION				\$ -
	CONTINGENCIES			5%	\$ 973
TOTAL CONSTRUCTION COST					\$ 22,389



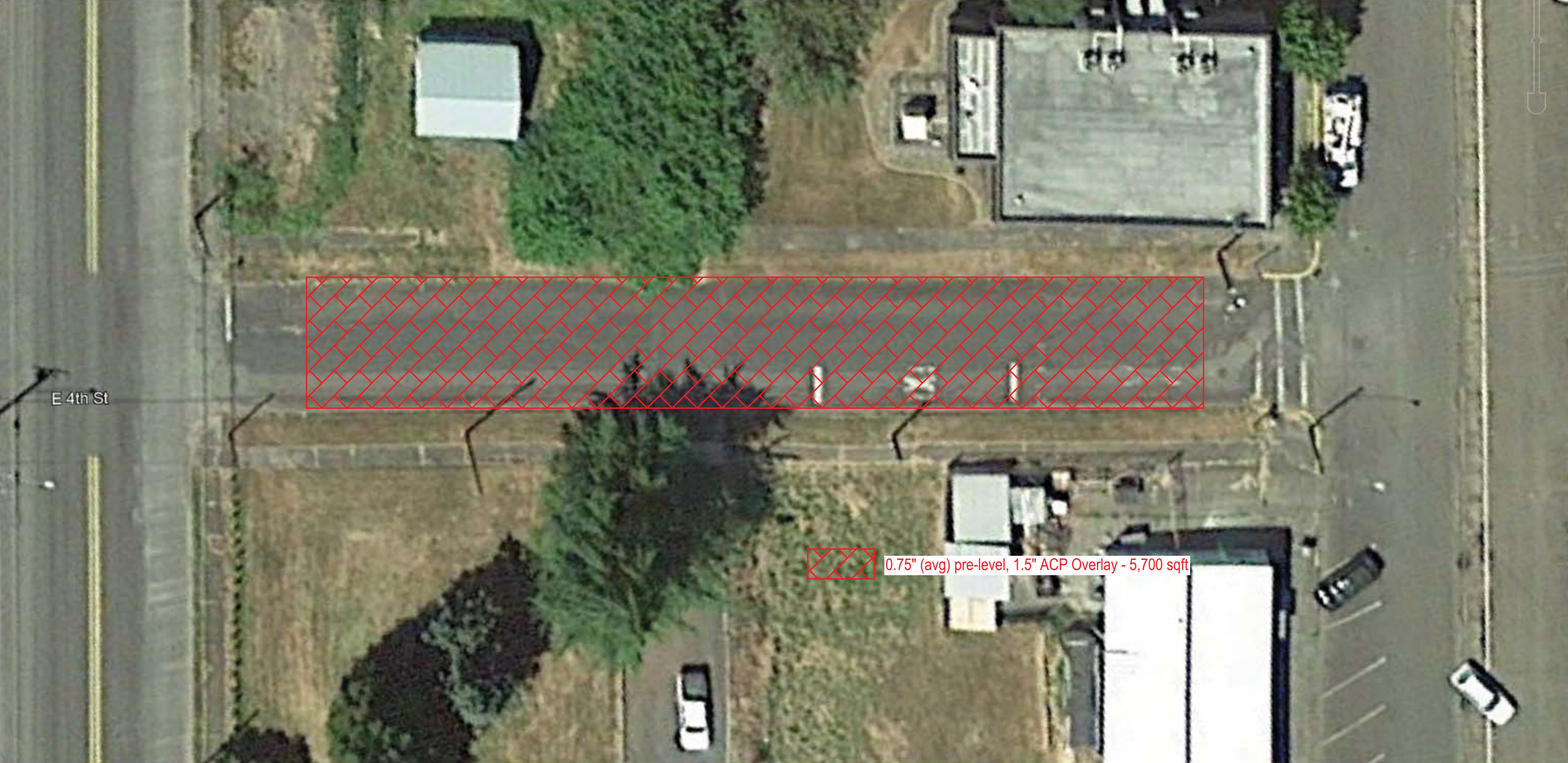
- Curb - 520 sqft
- Sidewalk - 1,140 sqft
- Base Agg : 8", ACP : 3.5" - 3,900 sqft
- 0.75" (avg) pre-level, 1.5" ACP Overlay - 6,310 sqft
- Driveway Approach - 420 sqft



0.75" (avg) pre-level, 1.5" ACP Overlay - 5,700 sqft

E 33 St

E A St



E 4th St



0.75" (avg) pre-level, 1.5" ACP Overlay - 5,700 sqft